



HDPlayer User Guide
Single Screen Mode

Step 1

Download and install the HDPlayer software to a windows laptop >>

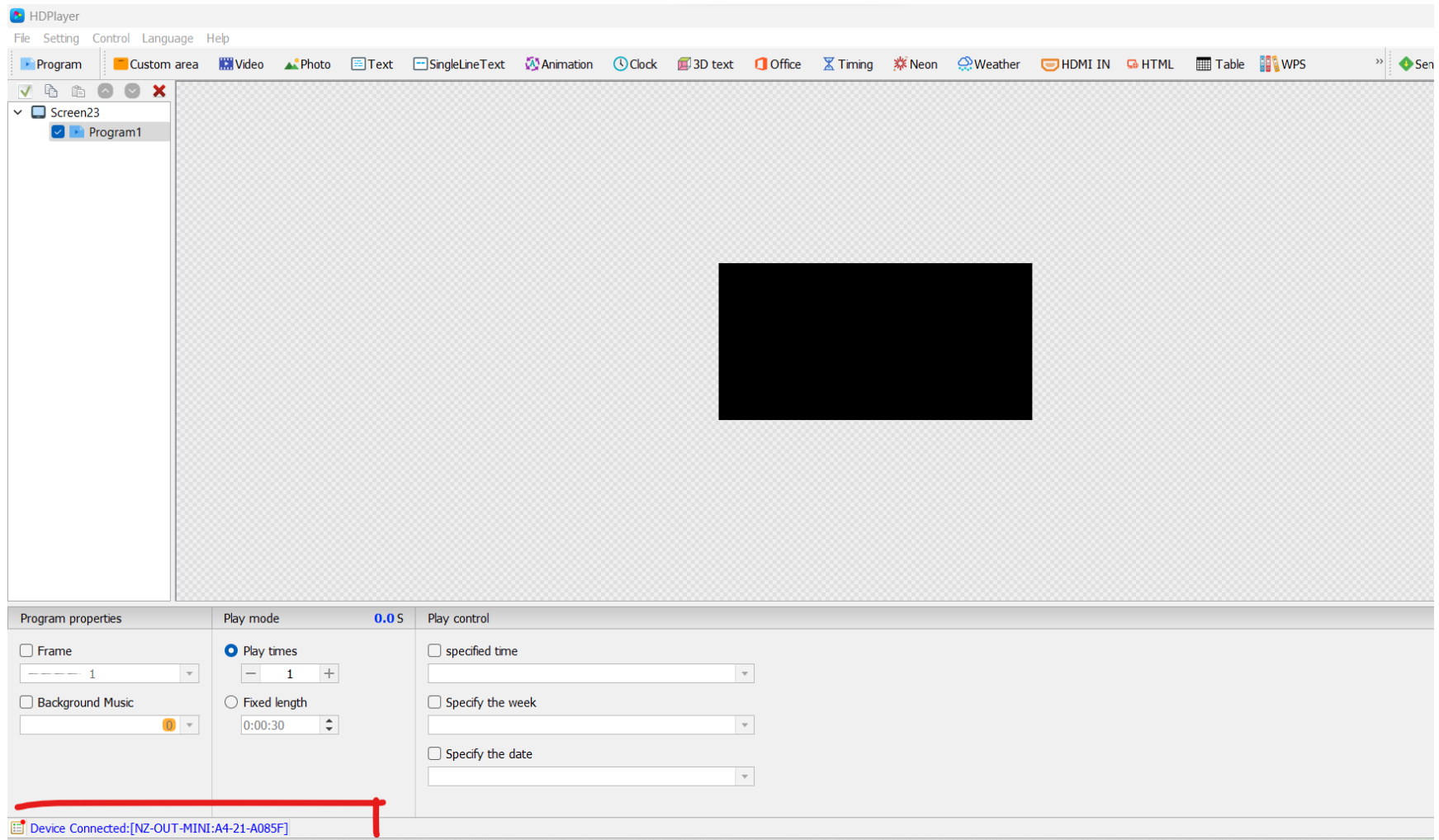
<https://videodisplay.com.au/Software/HDPlayer.7.9.1.0.exe>

Step 2

Connect your laptop to the LED display in one of two ways:

- Wifi (the network name will usually start with an A4 or A5 - for exact wifi name see the silver sticker on the rear of your display). Password will be 88888888 or will be custom set prior by your account manager.
- Ethernet. Connect by cable from laptop to PC port on LED display. This option is faster and better for sending large files.

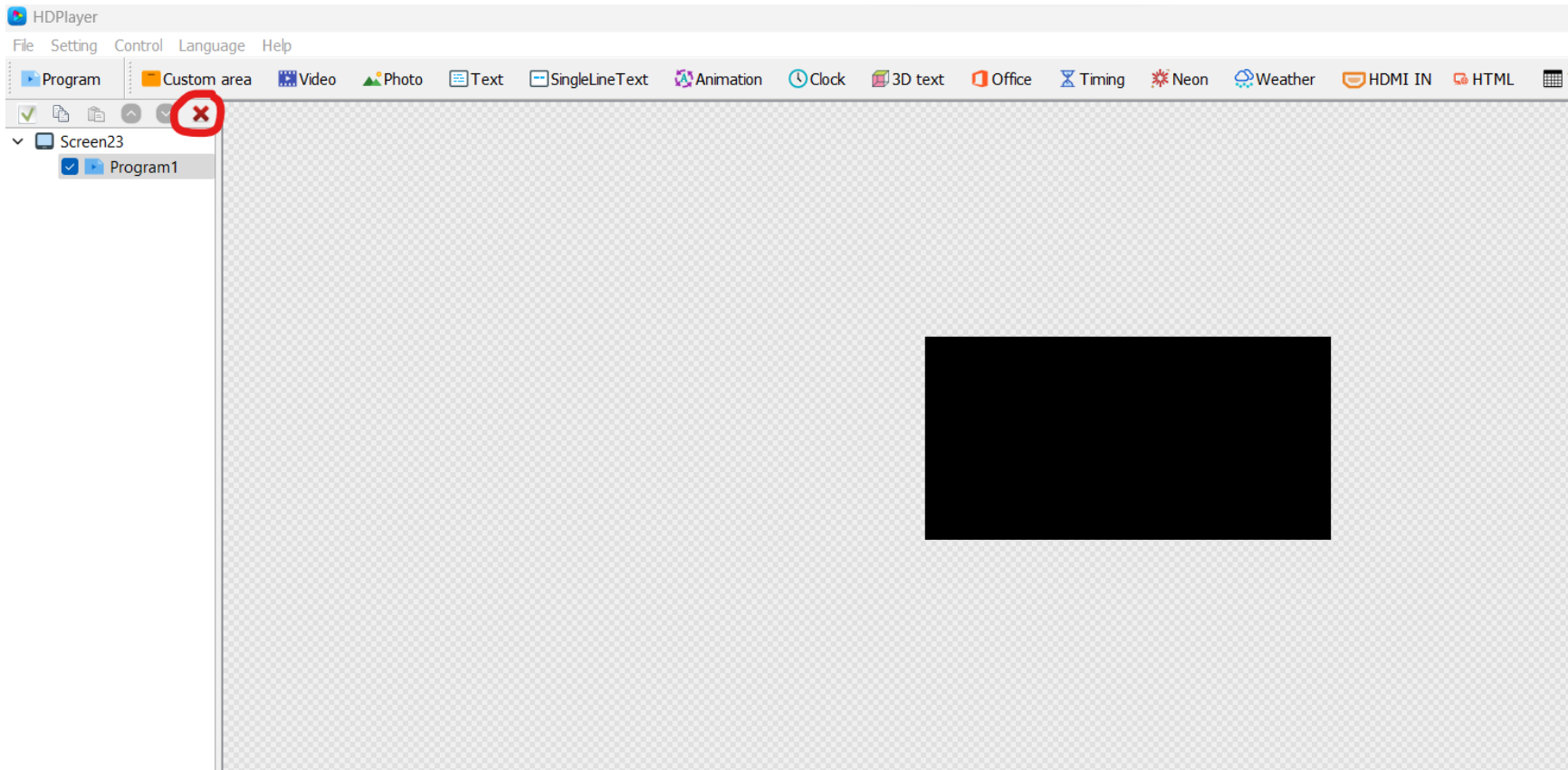
When successfully connected you'll see confirmation in the bottom left hand corner:



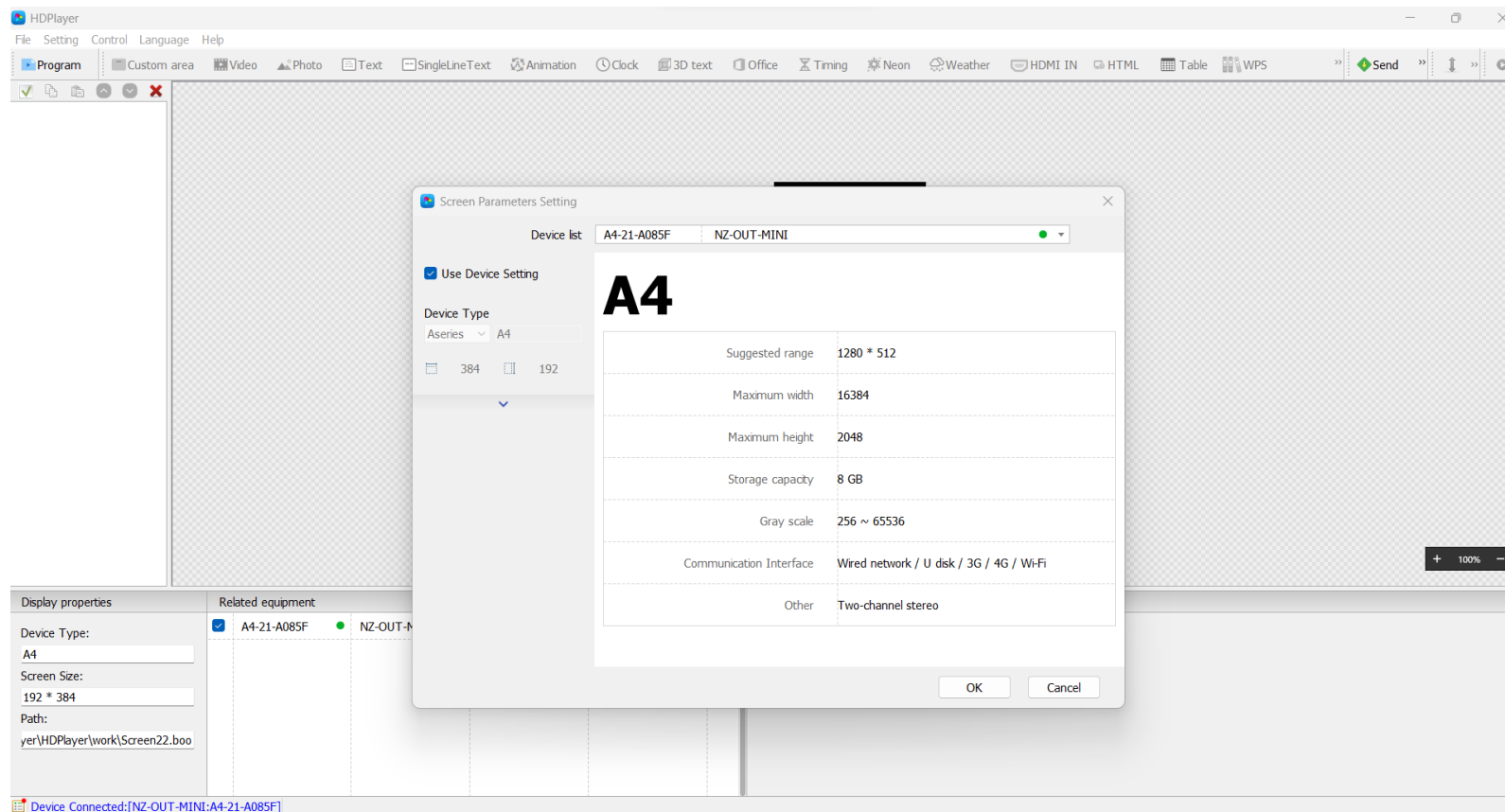
Step 3

When HDPlayer is opened for the first time after downloading, it defaults to pre-set screen type and size.

We want to delete that default setting so that the software automatically picks up the screen type and size from being connected by wifi/ethernet. To do that click 'OK', then on the left hand side delete the program setting by pushing the red X (see below) and then delete the Screen setting by pushing the red X again.



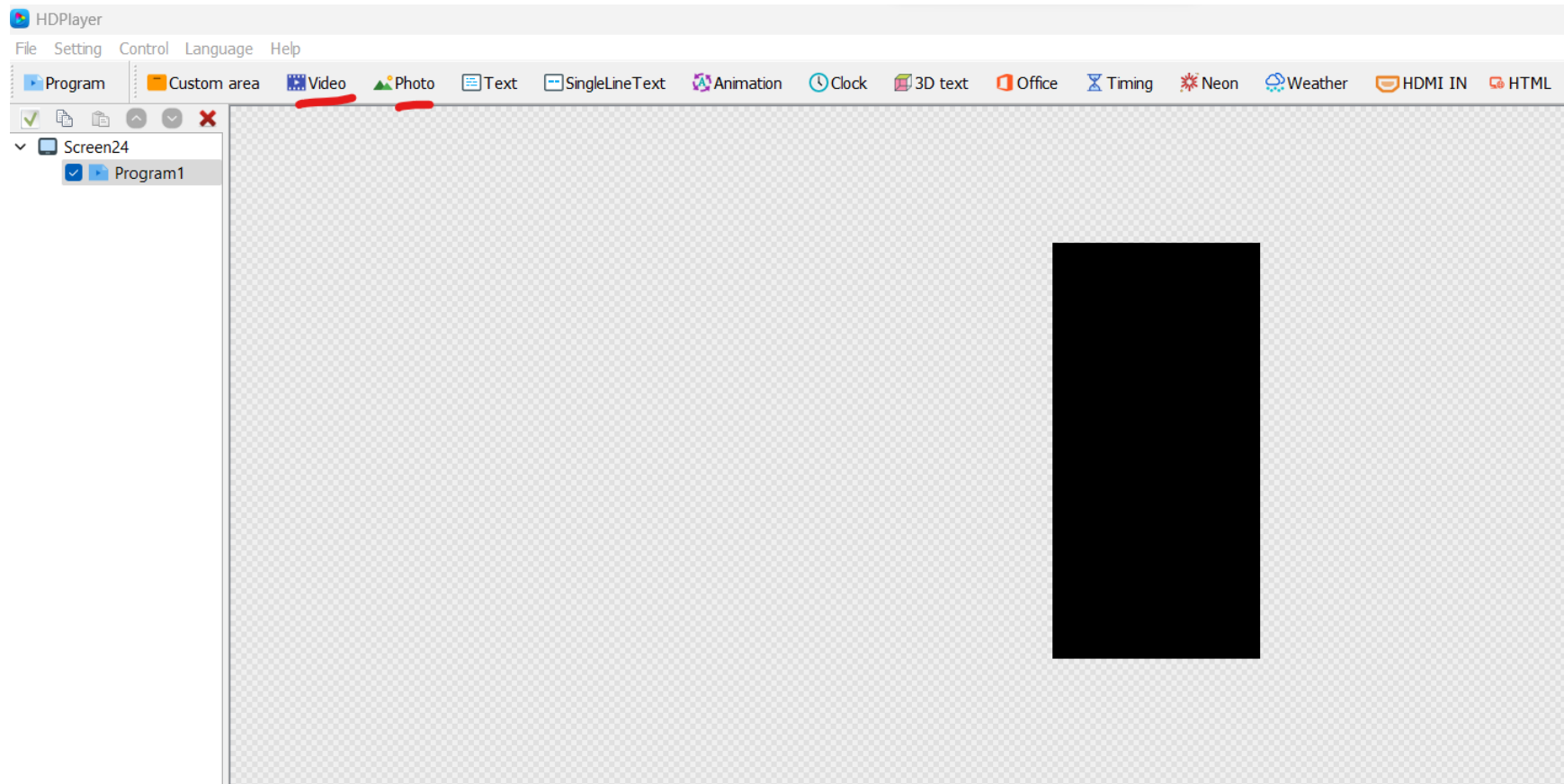
You'll see the grey box below which confirms the type and size of your screen (numbers vary depending on display type). Please note, after you've connected on that first occasion, the software will always remember your settings so step 3 doesn't need to be repeated.




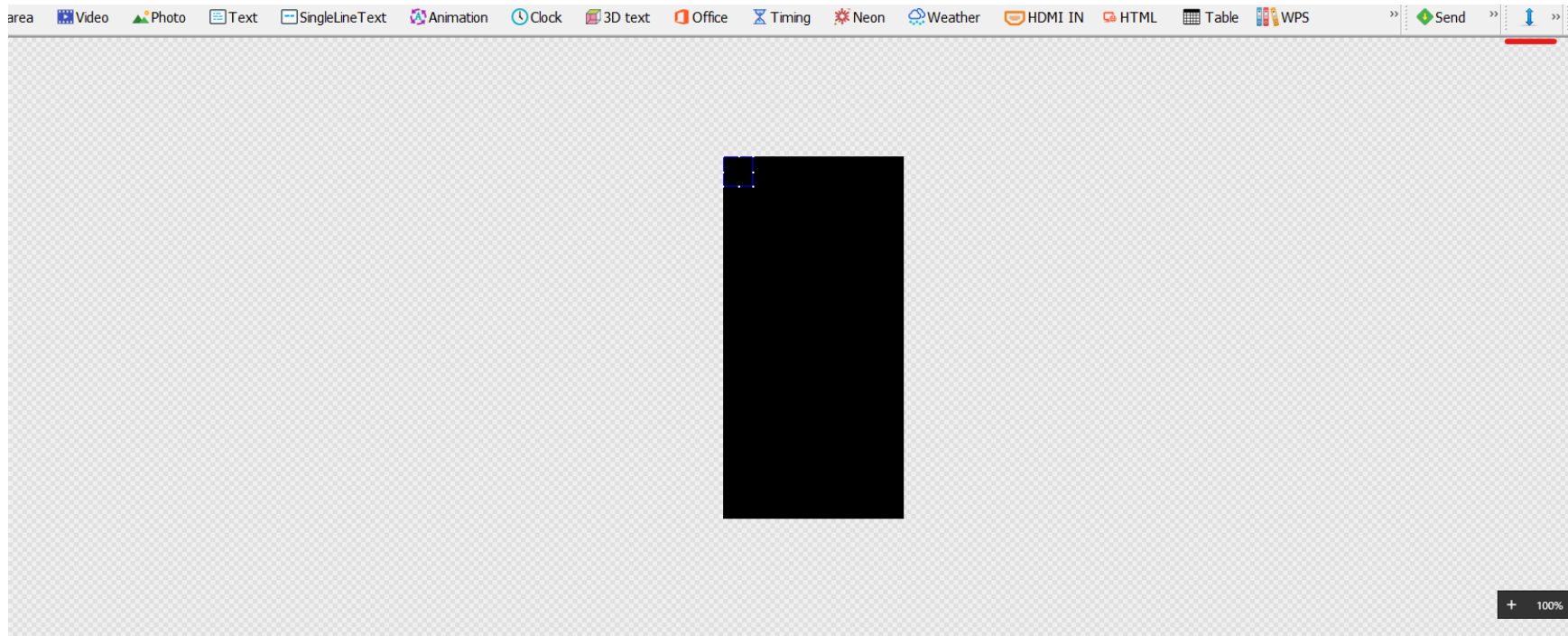
Click OK.

Step 4

In the centre of the screen you'll see a black area that will be the same dimensions as your display. Click Video or Photo at the top - depending on which type of content you want to upload.



A blue box will appear in the top left hand corner of the black area. We need to tell the software that we want to cover the entire screen area with our content. To do that open the menu next to the blue arrow on the top right which points up and down (see below in red), then select this option >> .



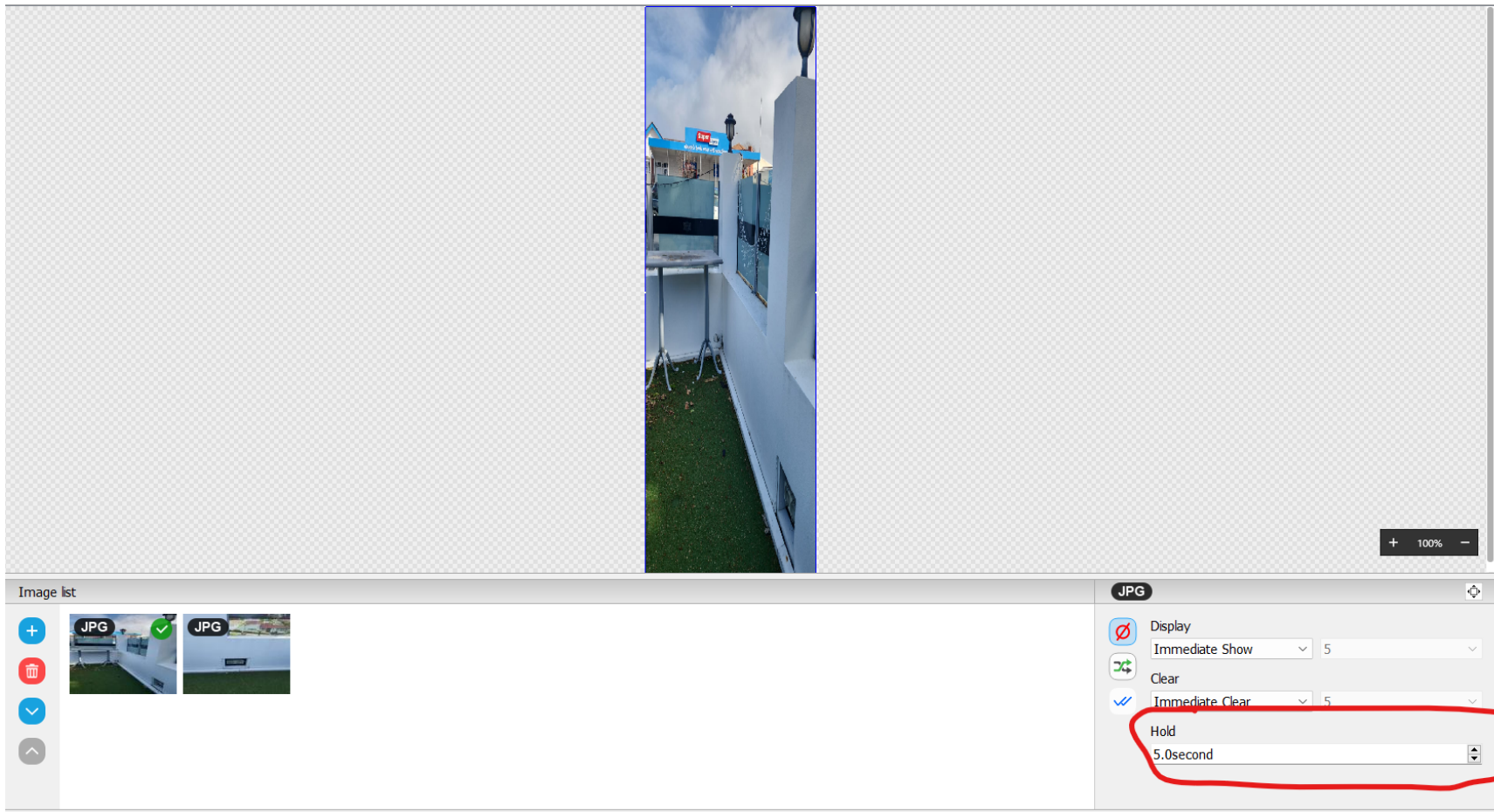
Step 5

Click the blue + symbol shown below and add files.



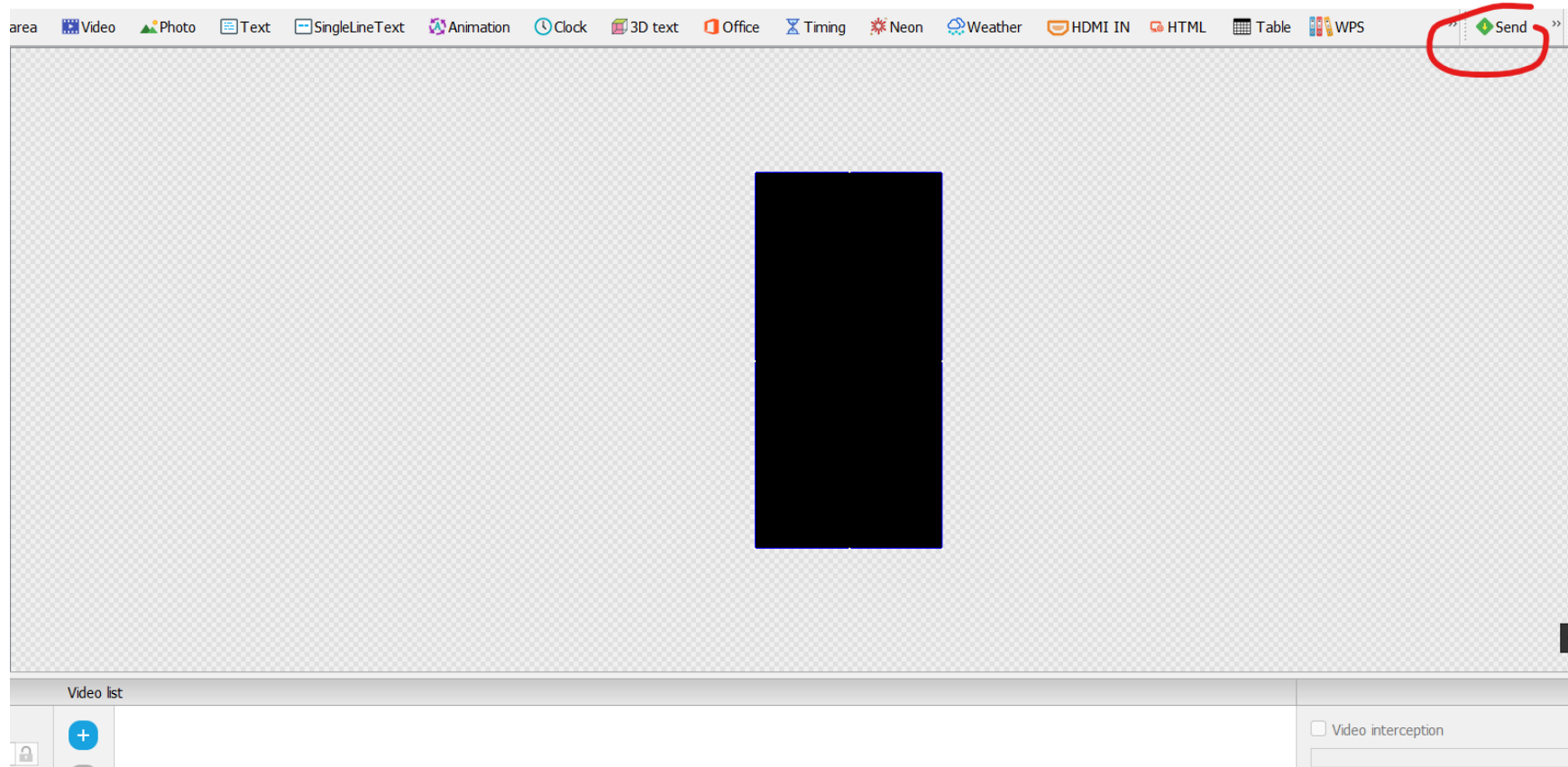
To change order just drag videos as required.

When uploading images you can set the time they are displayed in the bottom right hand corner after uploading the images. You need to set the display time for each uploaded image individually.



Step 6

Once all photos/videos are uploaded, hit green 'send' button - top right:



Troubleshooting

For any issues the best course of action is to close the program and start again at the beginning. When doing so make sure ALL Screens shown on the left hand side are deleted. For the method on this refer to/repeat step 3.

